

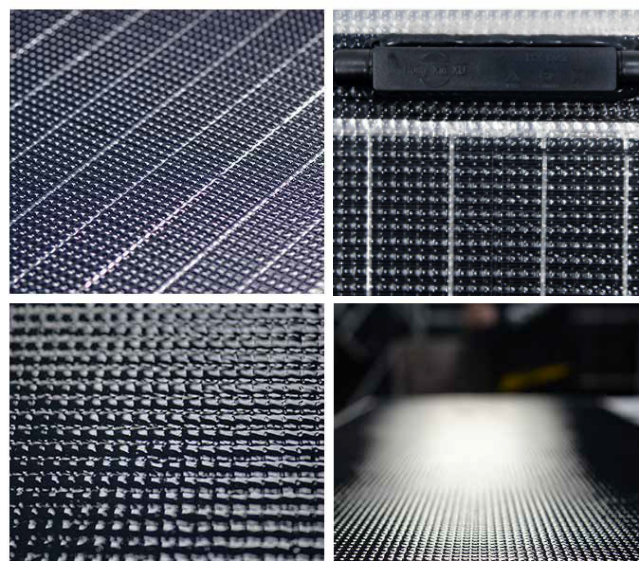
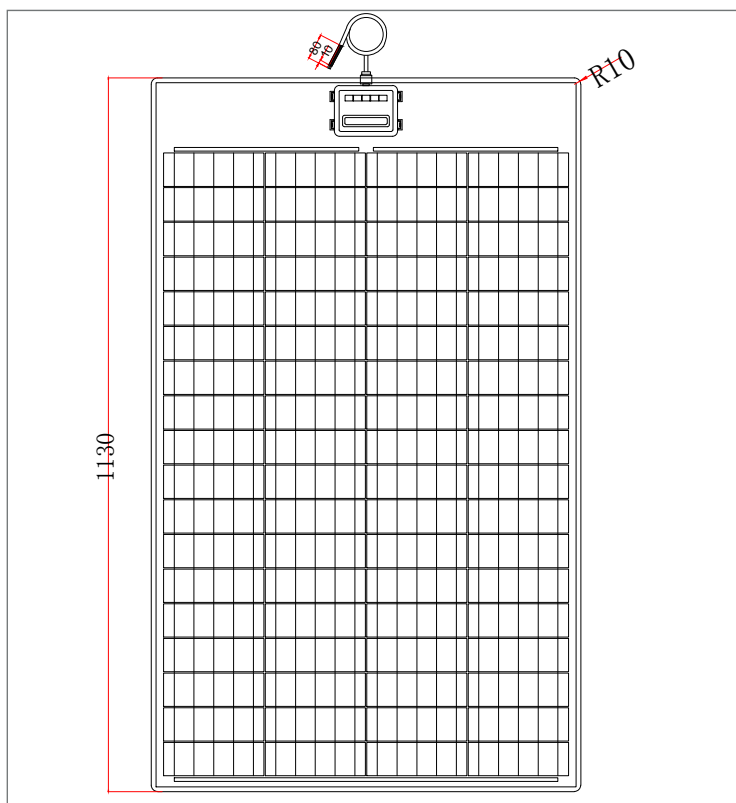
LEE-135W

Lättvikts Flexibel Solpanel



Mått 680*1130*4mm, 135W-20Volt

SBL Power Supply



— Detaljer —

680*1130*4mm, 135W-20V

Data

Maximal effekt (Pmax)	135W
Open-circuit voltage(Voc)	23.6
Voltage at Pmax(Vmp)	20.0
Short-circuit current(Isc)	7.36
Current at Pmax(Imp)	6.82
Cells Efficiency(%)	22.42%
The maximum system voltage	200VDC(IEC)
Power temperature coefficient	-0.43%/°C
Voltage temperature coefficient	-0.34%/°C
Current temperature coefficient	0.05%/°C
Output power tolerance	±3%
Arbetstemperatur	-20~75°C

Specifikationer

Kvalité solcell	A grade solar cells
Antal celler och utförande	72st (4*18)
Mått	680*1130*4mm
Vattentålig anslutningsbox	IP65/IP67
Garanti	1 år

